

Low Voltage Operation Omnipolar Detection Type

Hall Effect Switch IC

General Description

The ET3712A32 is a high sensitivity and high-accuracy Omnipolar Hall effect switch IC that operates at a low voltage and low current consumption. The output voltage will be pulled low when this IC detects the magnetic flux density is larger than operate point(B_{OPN}/B_{OPS}) and the output voltage will recover to high until the magnetic flux density is smaller than the release point(B_{RPN}/B_{RPS}). Using this IC with a magnet makes it possible to detect the open / close status in various applications.

To achieve a high-density mounting the ET3712A32 uses a super-small DFN4 package.

The ET3712A32 is suitable for battery powered portable devices such as mobile phones and portable PCs etc. due to its low voltage operation and low current consumption, the average current consumption is only typ. 12 μ A with a 1.85 V supply.

Features

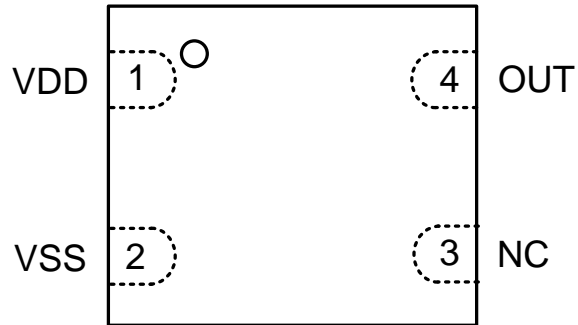
- Pole detection: Omnipolar pole
- Output logic: Active low
- Output form: Nch open-drain output, external pull-up resistor is required
- Operating Point: $B_{OP} = 3.0$ mT typ.
- Operating cycle: $t_{CYCLE} = 5.70$ ms typ.
- Current consumption: $I_{DD} = \text{typ. } 12.0$ μ A at 1.85 V
- Power supply voltage range: $V_{DD} = 1.6$ V to 3.5 V
- Operation temperature range: $T_A = -40^{\circ}\text{C}$ to $+85^{\circ}\text{C}$
- Lead-free (Sn 100%), halogen-free
- Super small DFN4(1.2mm \times 1.6mm) package

Application

- Open/Close detection for flip mobile phones
- Smart cover for smart phones
- Smart cover for portable PCs, tablet PCs
- Digital video cameras and portable game consoles
- Home appliances

ET3712A32

Pin Configuration

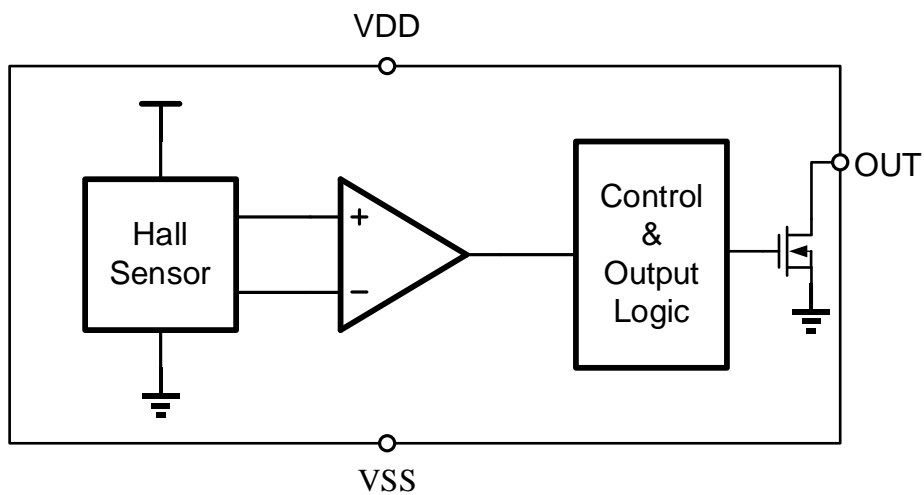


TOP VIEW

Pin Function

Pin No.	Pin Name	Pin Function
1	VDD	Power supply pin
2	VSS	Ground Pin
3	NC	No connection
4	OUT	Output pin

Block Diagram



ET3712A32

Functional Description

Applied magnetic flux

The magnetic flux applied to ET3712A32 should be on the vertical direction on marking surface. If not, the horizontal component has no effect to detection. ET3712A32 is omnipolar type detector, the output voltage (V_{OUT}) is inverted when the S or N type magnetic flux is applied to IC.

Below shows the direction in which magnetic flux should be applied.

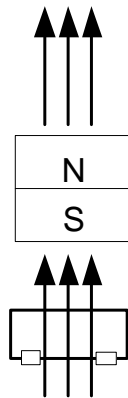


Figure1. Magnetic flux direction

Hall sensor Position

The Hall sensor embedded in ET3712A32 is at the center of IC. As show below, the position of this Hall sensor is located in the area indicated by a circle, the diameter size of which is about 0.3 mm.

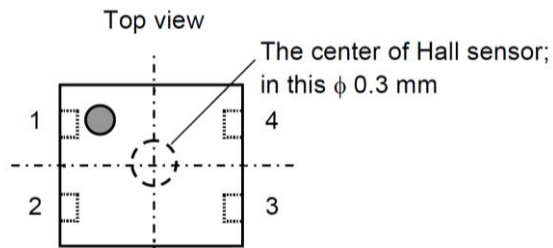


Figure2. Hall sensor Position

Detecting Operation

ET3712A32 detects magnetic field periodically. When vertical component of the magnetic flux applied to IC exceeds the operating point (B_{OPN} or B_{OPS}) such as the S or N pole of a magnet is moved closer to IC, V_{OUT} changes from "H" to "L". On the contrary, if magnetic flux is lower than the release point (B_{RPN} or B_{RPS}), V_{OUT} changes from "L" to "H".

ET3712A32

The relationship between the magnetic flux density and V_{OUT} is shown below.

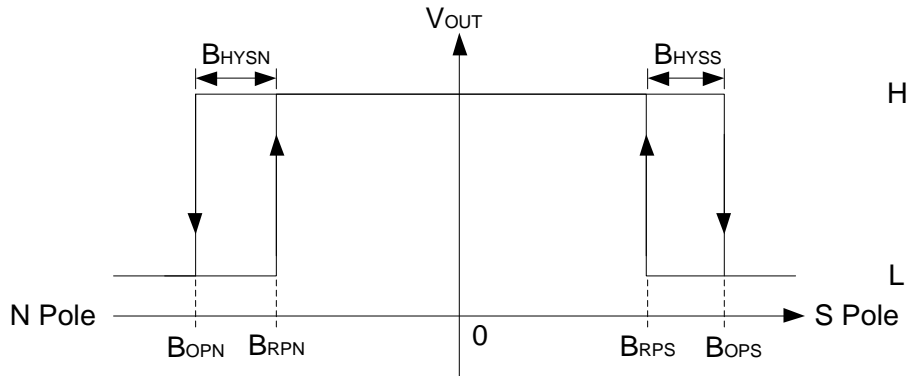


Figure3. Magnetic flux density vs V_{OUT}

Operating Current

ET3712A32 performs the intermittent operation, therefore the average current consumption depends on the current in active mode, the active period (t_{AW}), the current in sleep mode, and sleep period (t_{SL}). The active current is about 640 μA typically, and 0.72 μA at sleep mode. Please refer to electrical characteristic table for detail.

The time dependency of the current consumption is shown below.

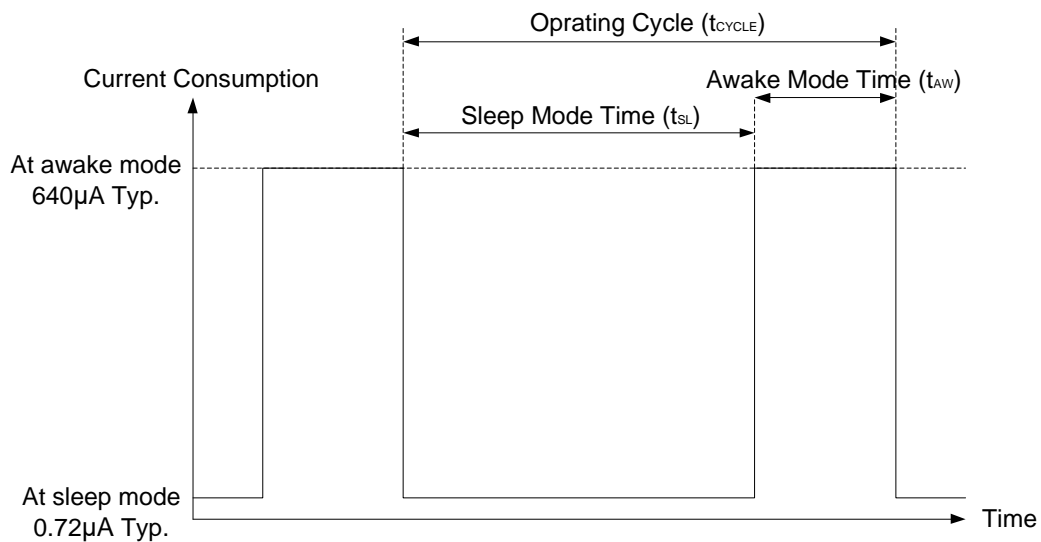
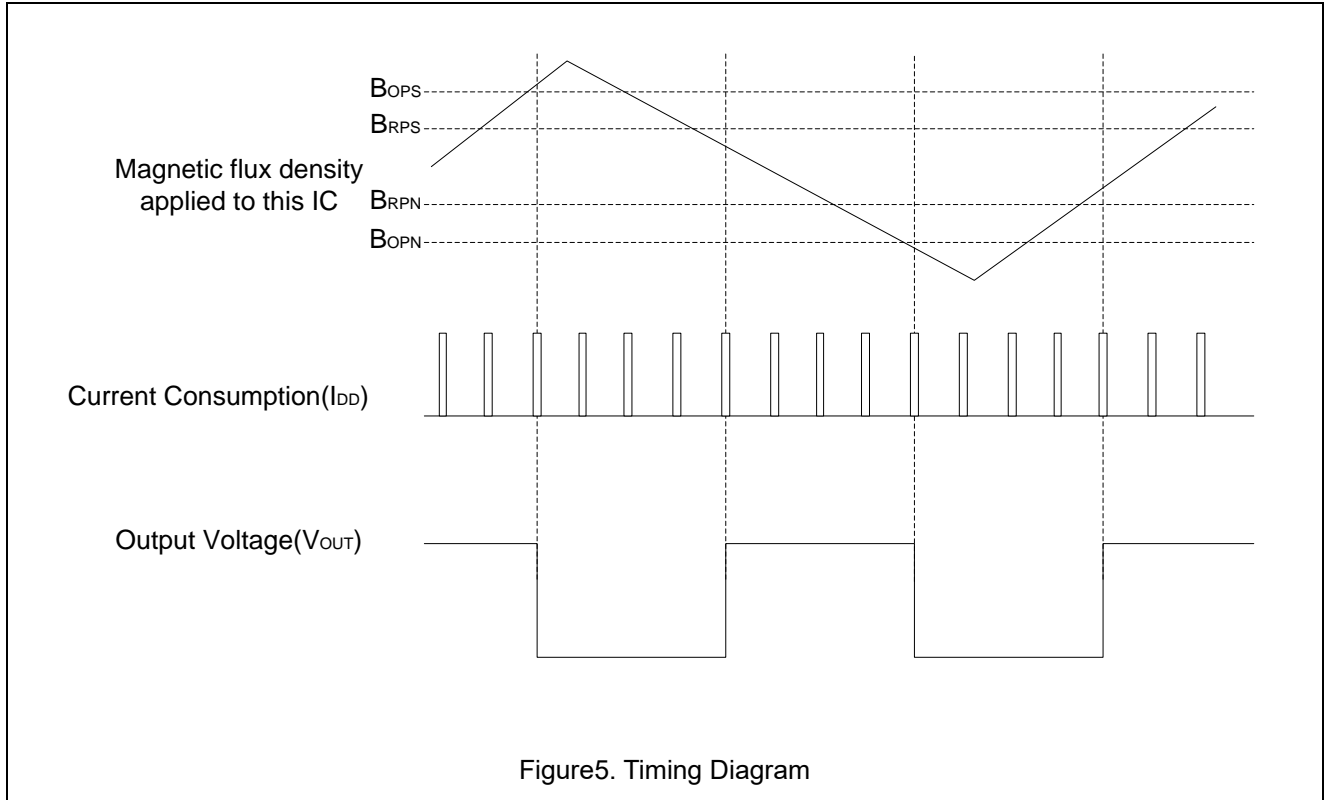


Figure4. Operating Current

ET3712A32

Timing Diagram

The operation timing of this IC is shown below.



Absolute Maximum Ratings

(T_A = +25°C unless otherwise specified)

Symbol	Parameters	Rating	Unit
V _{DD}	Power supply voltage	V _{SS} -0.3 ~ V _{SS} +7.0	V
I _{OUT}	Output current	±1.0	mA
V _{OUT}	Output voltage	V _{SS} - 0.3 ~ V _{DD} + 0.3	V
T _A	Operation ambient temperature	-40 ~ +85	°C
T _{STG}	Storage temperature	-40 ~ +125	°C
θ _{JA}	Junction-to-ambient thermal resistance	300	°C/W

Caution: The absolute maximum ratings are rated values exceeding which the product could suffer physical damage. These values must therefore not be exceeded under any conditions.

ET3712A32

Electrical Characteristics

(T_A = +25°C, V_{DD} = 1.85 V, unless otherwise specified)

Symbol	Parameters	Conditions	Min	Typ	Max	Unit
V _{DD}	Power supply voltage	-	1.60	1.85	3.50	V
I _{DD}	Current consumption	Average Supply Current		12.0	22.0	μA
V _{OL} ⁽¹⁾	Output low voltage	Output transistor Nch, I _{OUT} = 0.5 mA, B > B _{OP}		0.05	0.2	V
I _{LEAK}	Leakage current	Output transistor Nch, V _{OUT} = 3.5 V		0.03	1	μA
t _{AW}	Awake mode time			0.10		ms
t _{SL}	Sleep mode time			5.60		ms
t _{CYCLE}	Operating cycle	t _{AW} + t _{SL}		5.70	12.00	ms

Note1: The output low voltage is dependent to the pull-up resistor R_{PU} and the pull-up voltage V_{PU}, please refer to the characteristics table in Typical Application Circuit.

Magnetic Characteristics

(T_A = +25°C, V_{DD} = 1.85 V, unless otherwise specified)

Parameters		Symbol	Conditions	Min	Typ	Max	Unit
Operation point ⁽²⁾	N pole	B _{OPN}		1.4	3.0	4.0	mT ⁽⁵⁾
	S pole	B _{OPS}		-4.0	-3.0	-1.4	mT
Release point ⁽³⁾	N pole	B _{RPN}		1.1	2.2	3.7	mT
	S pole	B _{RPS}		-3.7	-2.2	-1.1	mT
Hysteresis width ⁽⁴⁾	N pole	B _{HN}	B _{HN} = B _{OPN} - B _{RPN}		0.8		mT
	S pole	B _{HS}	B _{HS} = B _{OPS} - B _{RPS}		0.8		mT

Notes:

2. Operating points (B_{OPN}, B_{OPS}): B_{OPN} and B_{OPS} are the values of magnetic flux density triggers the output voltage (V_{OUT}) to low by increasing the N pole or S pole magnetic flux density applied to this IC. Even when the magnetic flux density is larger than B_{OPN} or B_{OPS}, V_{OUT} status is held.

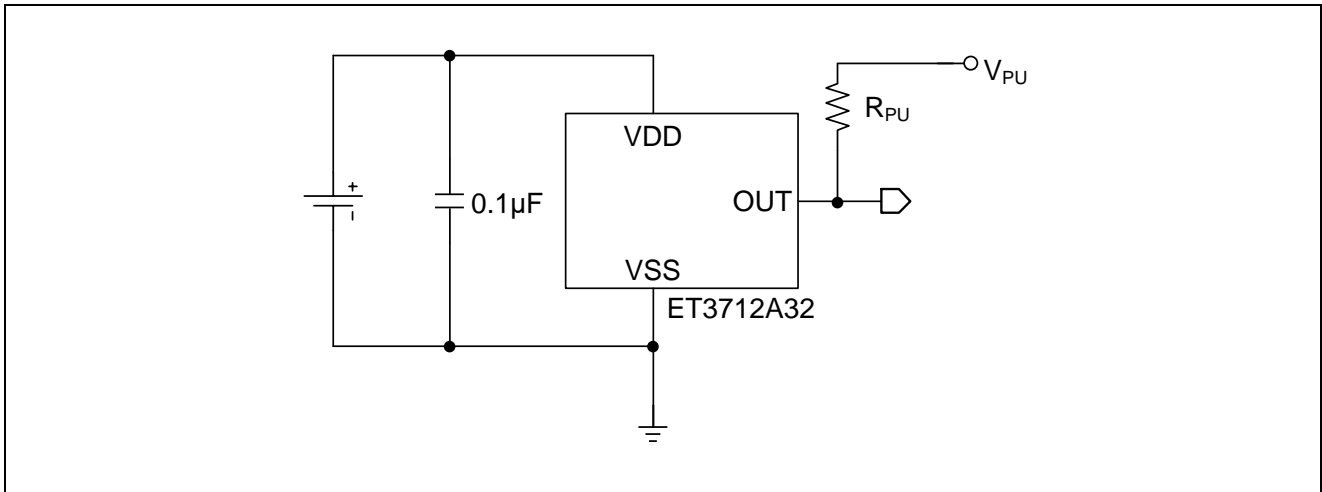
3. Release points (B_{RPN}, B_{RPS}): B_{RPN} and B_{RPS} are the values of magnetic flux density makes the output voltage (V_{OUT}) recover to high by decreasing the N pole or S pole magnetic flux density applied to this IC. Even when the magnetic flux density is lower than B_{RPN} or B_{RPS}, V_{OUT} status is held.

4. Hysteresis widths (B_{HN}, B_{HS}): B_{HN} and B_{HS} are the difference between B_{OPN} and B_{RPN}, and B_{OPS} and B_{RPS}, respectively.

5. The unit of magnetic density mT can be converted by using the formula 1 mT = 10 Gauss.

ET3712A32

Application Circuit



Note*: Below is R_{PU} vs V_{OL} Table :

R _{PU} (kΩ)	TYP. V _{OL} (mV)
1.0	95
1.5	63
2.2	45
10.0	10
20.0	5
100.0	1

Test Condition: V_{DD}=1.8V, V_{PU}=1.2V, B > B_{OP}.

The recommended pull-up resistor R_{PU} value is from 1.0kΩ to 100.0kΩ. It is only for typical application at V_{DD}=1.8V and V_{PU}=1.2V when the magnetic flux is larger than operation point B_{OP}.

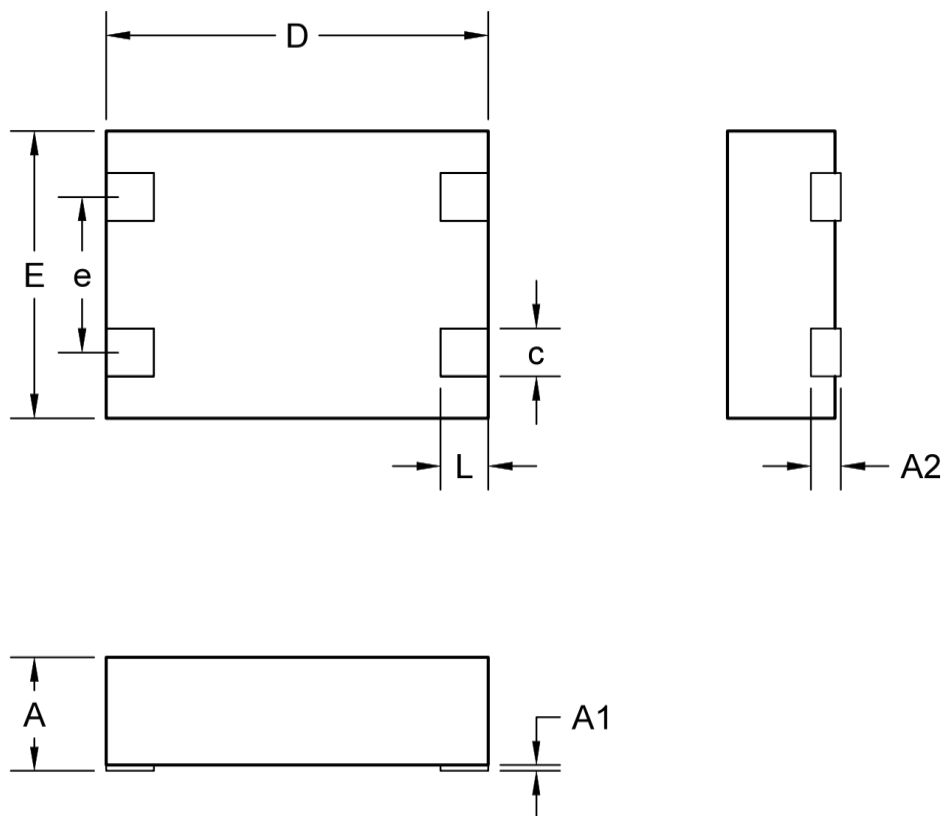
Precautions

- The power supply for this IC should has low impedance, the IC may malfunction due to a supply voltage drop caused by feed through current.
- Power supply voltage rapidly changing may cause IC malfunction.
- Large stress on this IC may affect the magnetic characteristics. Avoid large stress applied to the IC on a board.

ET3712A32

Package Dimension

DFN4



COMMON DIMENSIONS
(UNITS OF MEASURE=MILLIMETER)

SYMBOL	MIN	NOM	MAX
A	0.40	0.45	0.50
A1	0	-	0.05
A2	0.125 REF		
c	0.15	0.20	0.25
D	1.55	1.60	1.65
E	1.15	1.20	1.25
e	0.65 BSC		
L	0.15	0.20	0.25

ET3712A32

Revision History and Checking Table

Version	Date	Revision Item	Modifier	Function & Spec Checking	Package & Tape Checking
1.0	2022.9.19	Initial Version	Wanggp	Wanggp	Zhuji